

DANCOVER[®]



Manual
for
Multi-Channel
Remote Control

Match the multi-channel remote control

Control System

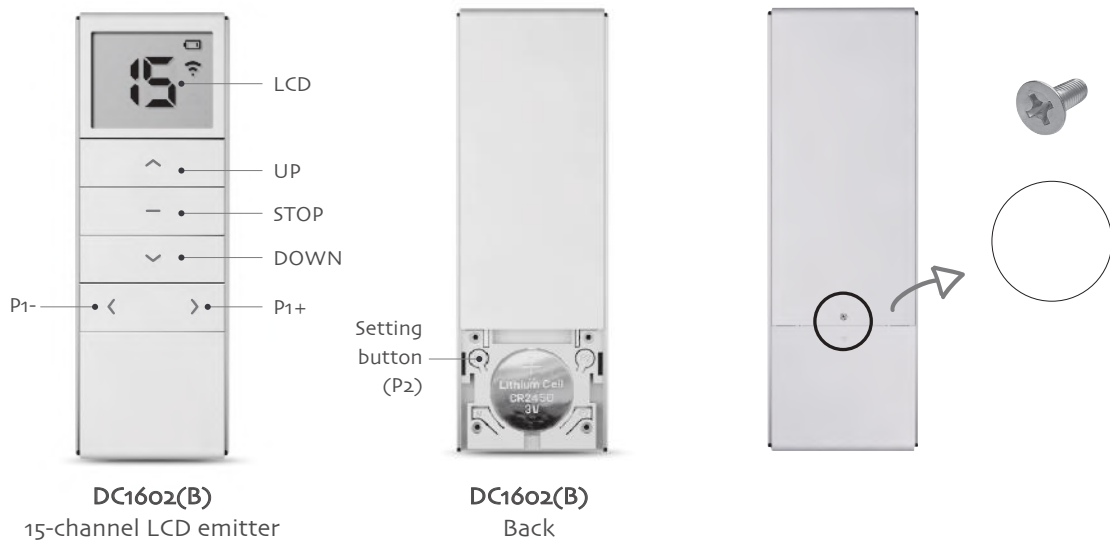


DC1602(B) 15-channel Emitter Instruction

Version: B/02

Instruction Of Buttons

Note: After the operation is completed, after the back cover of the emitter is closed, please screw on Turnbuckle of the back cover.



Technical specification

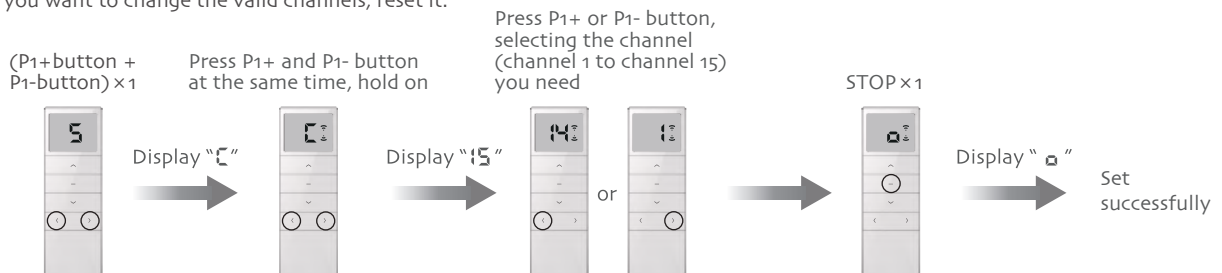
Battery: 3V (CR2450)	Battery life: >2 years	Radio frequency: 433MHz
Working temperature: -10°C~50°C	Transmitting power: 10 mW	Radio range: 200 meters outdoor, 35 meters indoor

Warning

- 1, Emitter couldn't expose to moisture or be striked heavily, or else the emitter life will be affected;
- 2, If the emitter is not so sensitive or the radio range becomes shorter, pls check whether to change the battery;
- 3, It's forbidden to use different type battery to avoid any dangerous risk;
- 4, Dispose of used batteries properly.

Effective Channel Selection

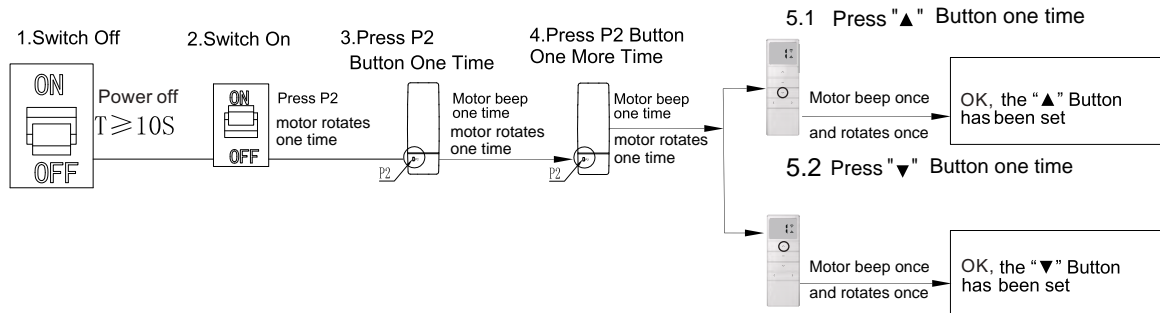
Note: In the setting state, press the UP or DOWN button you can exit quickly. If you want to change the valid channels, reset it.



Matching code, deleting code, stroke setting and clean stroke

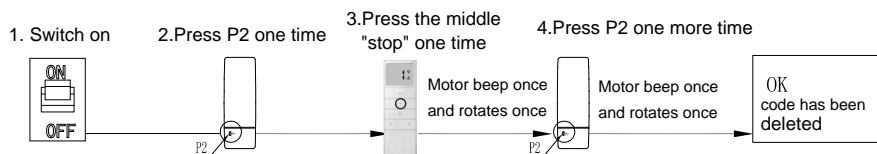
Settings for matching code

Note: The interval of pressing each button should not exceed 4 seconds, or the system will turn to the original status.



Settings for deleting code

Note: The interval of pressing each button should not exceed 4 seconds, or the system will turn to the original status.



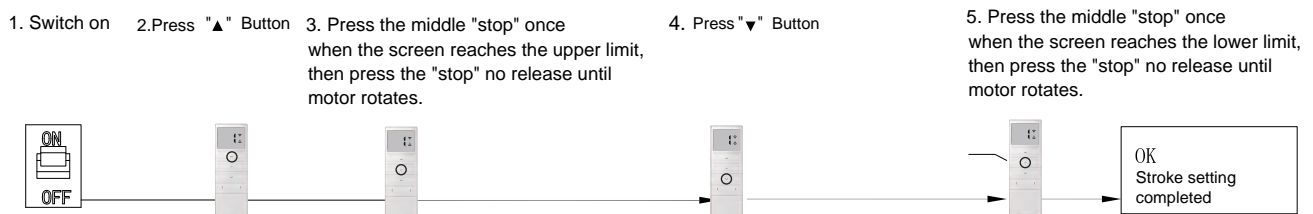
Settings for stroke

Note 1:

1. It can not be the same position for the upper stroke and the lower stroke
2. It can be quit only when the lower stroke setting completed.
3. When the stroke is set, it has the memory function when power-off.

Note 2:

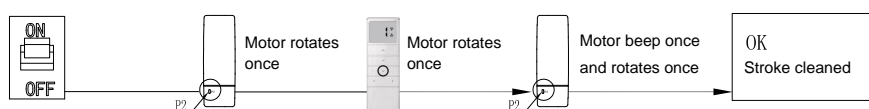
1. In the process of adjusting the upper and lower limit stroke when the motor is running up and down, press the setting key once, the motor will enter the step mode, and then press the setting key once again to exit the step mode.
2. Step mode: the motor will run up and down in step mode to adjust the limit position more accurately.



Setting for stroke clean

Note: The interval of pressing each button should not exceed 4 seconds, or the system will turn to the original status.

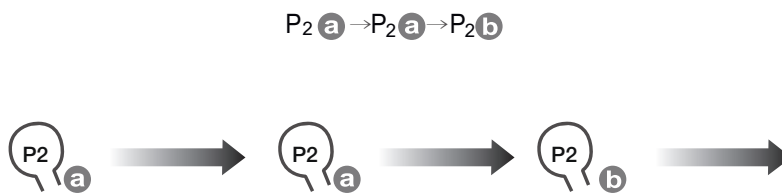
1. Switch on
2. Press P2 once
3. Press "▼" Button once
4. Press P2 once again



Screens are controlled with the associated remote control, if you want more screens to be controlled from the same remote control, you can follow the points below.

1. Select channel first. (For example: emitter "a" is for screen 1, emitter "b" is for screen 2. If you want to use emitter "b" to control screen 1, you have to select different channel.

2. Then do as following.



Contact information

Austria



Belgium



Croatia



Denmark



Estonia



Finland



France



Germany



Ireland



Italy



Latvia



Lithuania



Nederland



Norway



Poland



Portugal



Spain



Sweden



Switzerland



UK

